





The New York Times

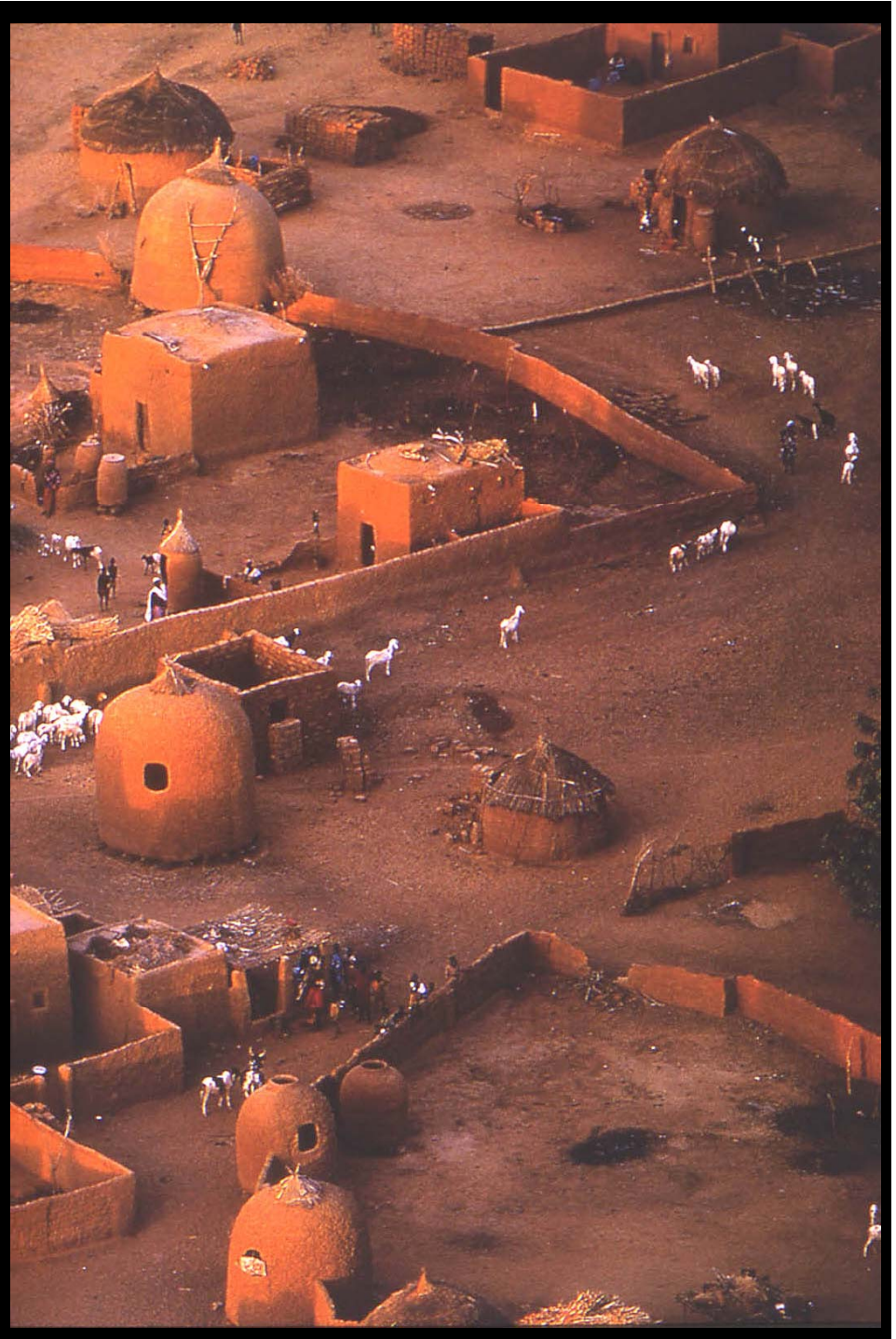




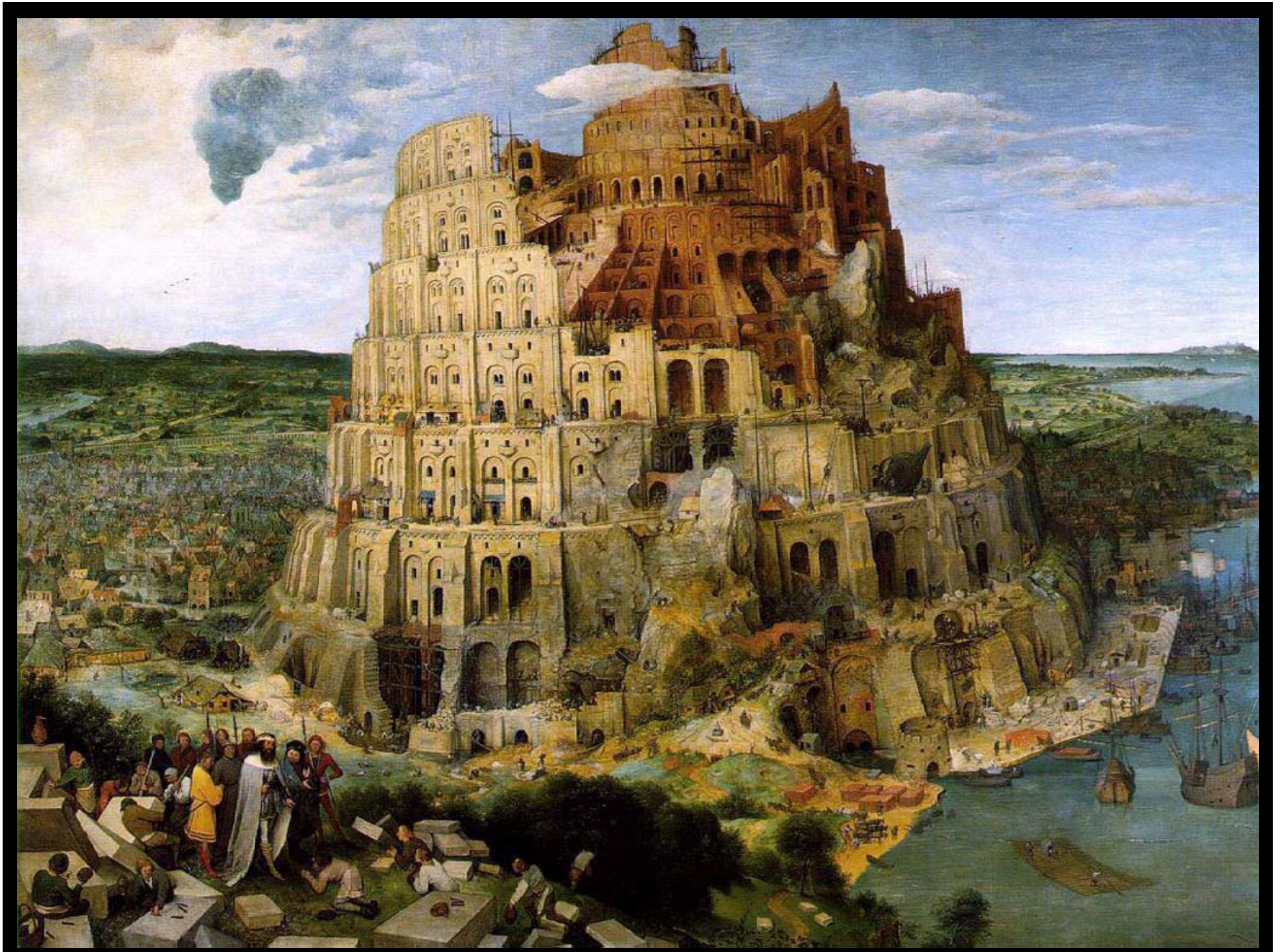


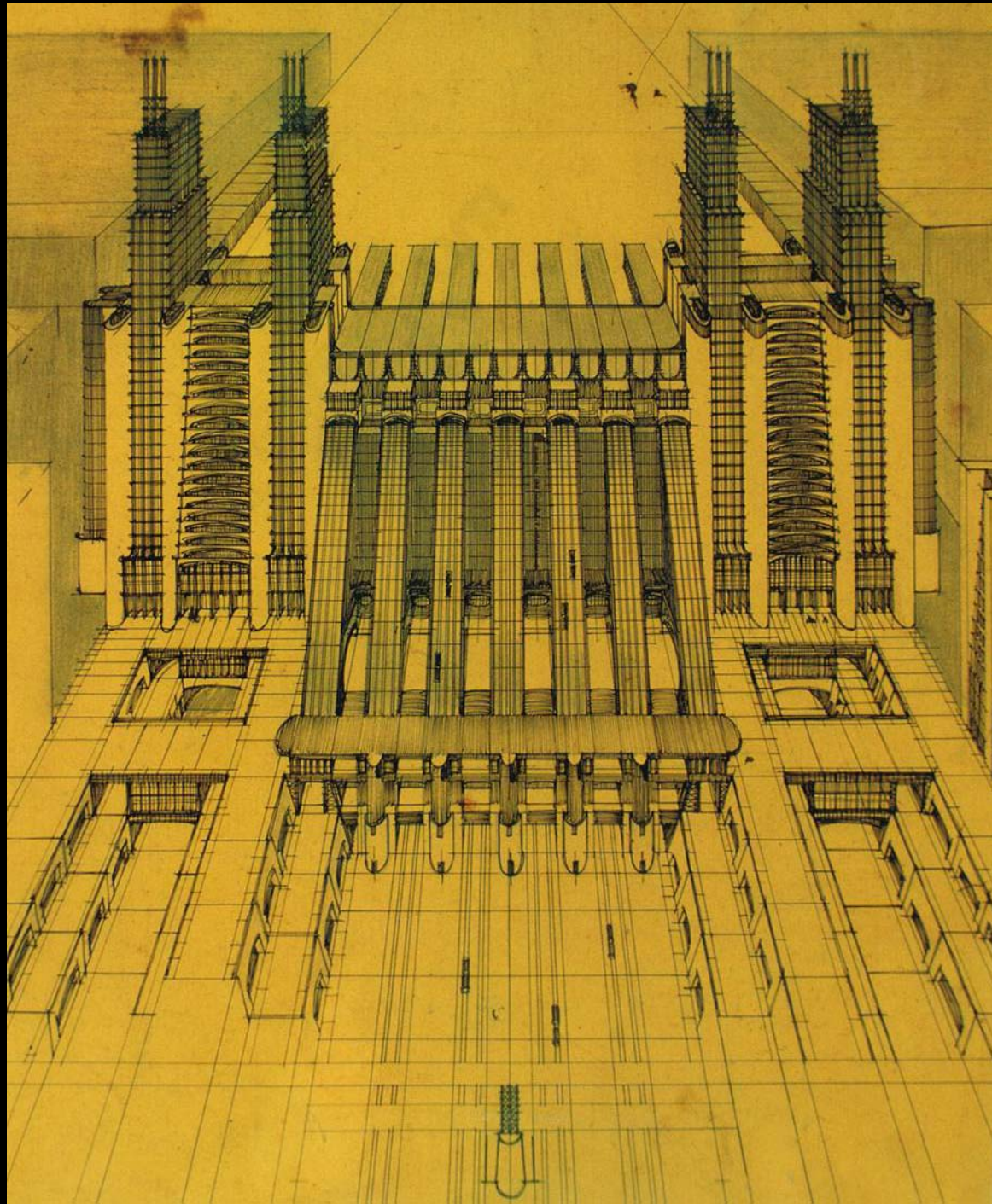




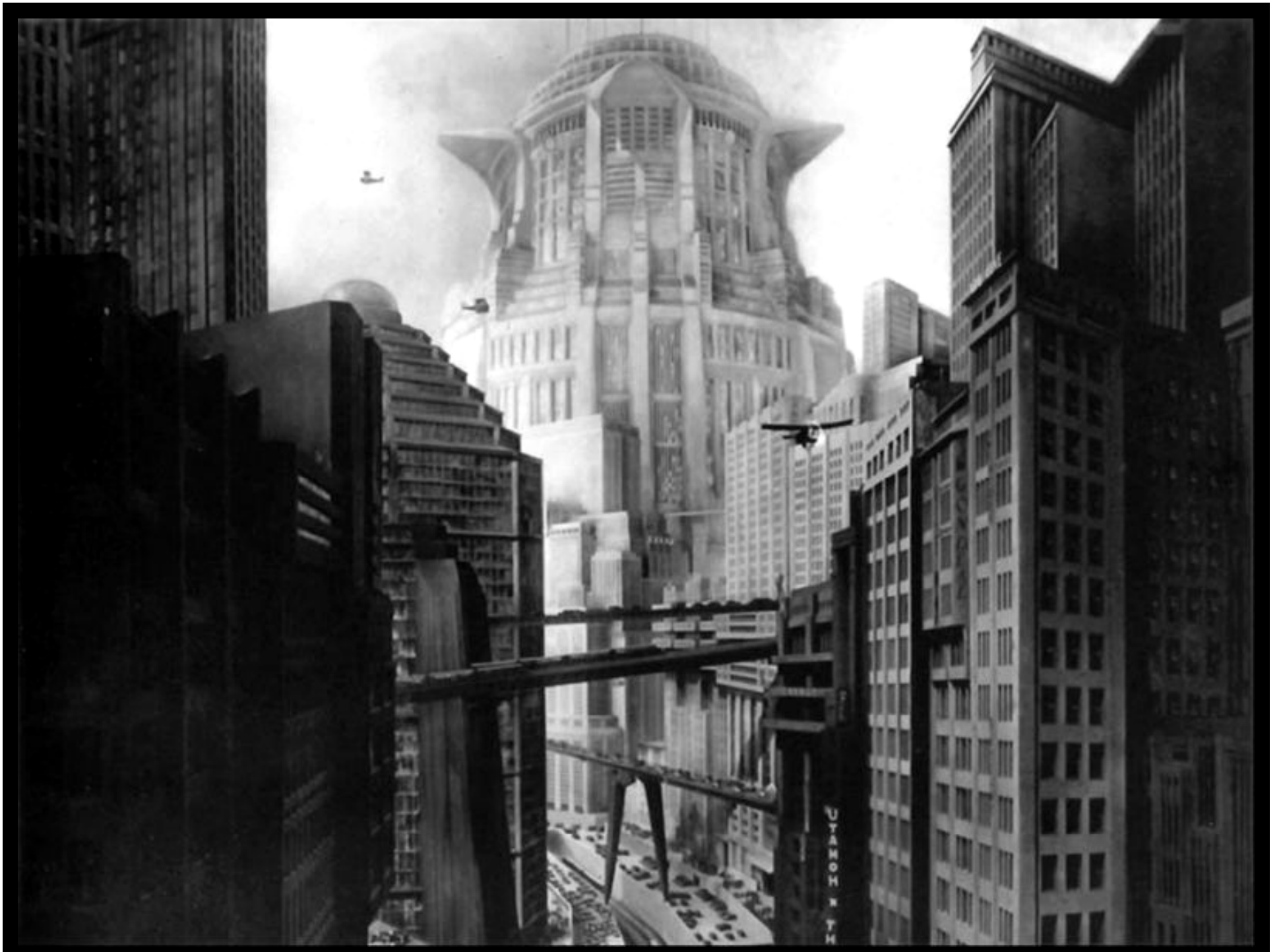


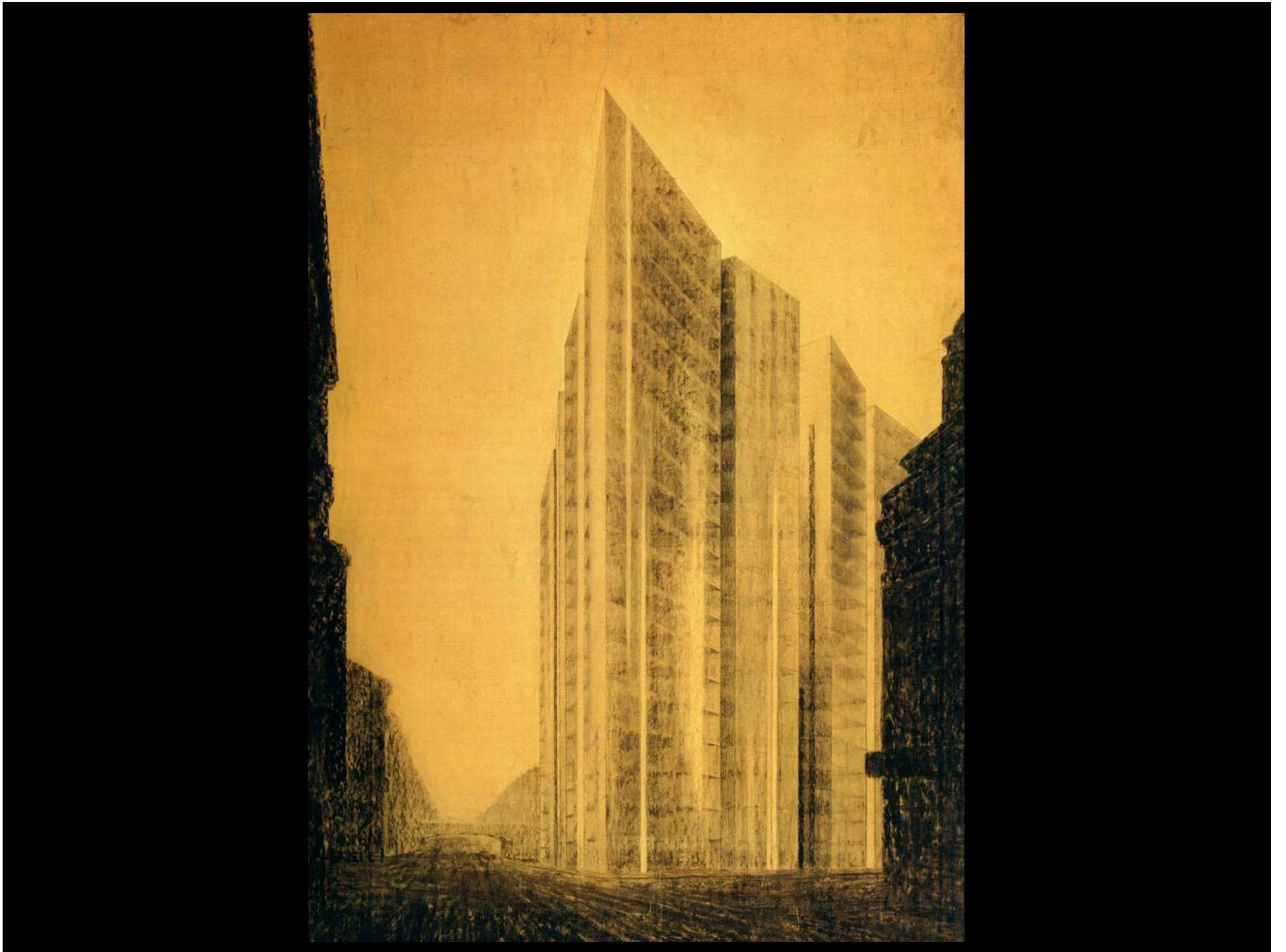


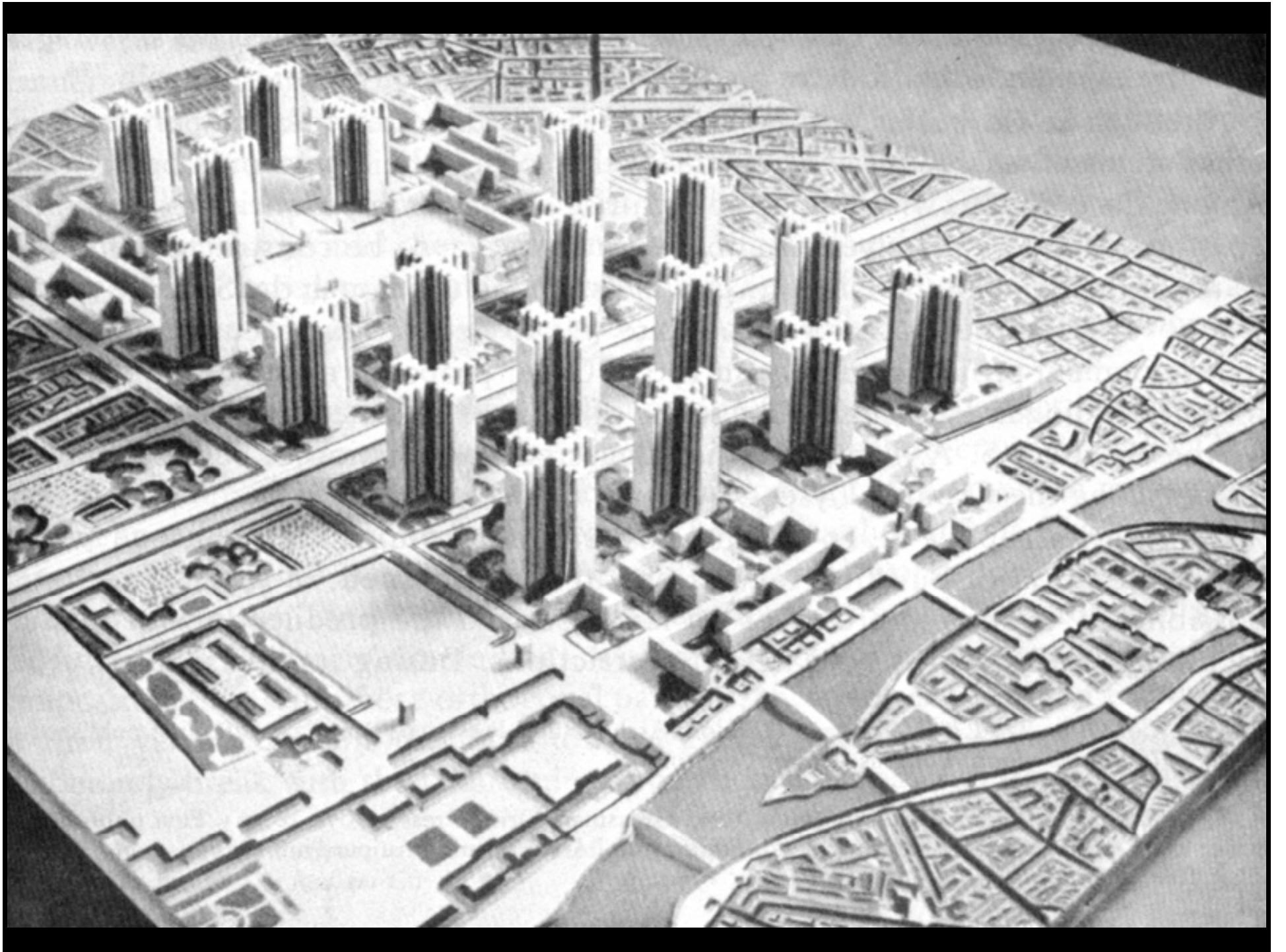


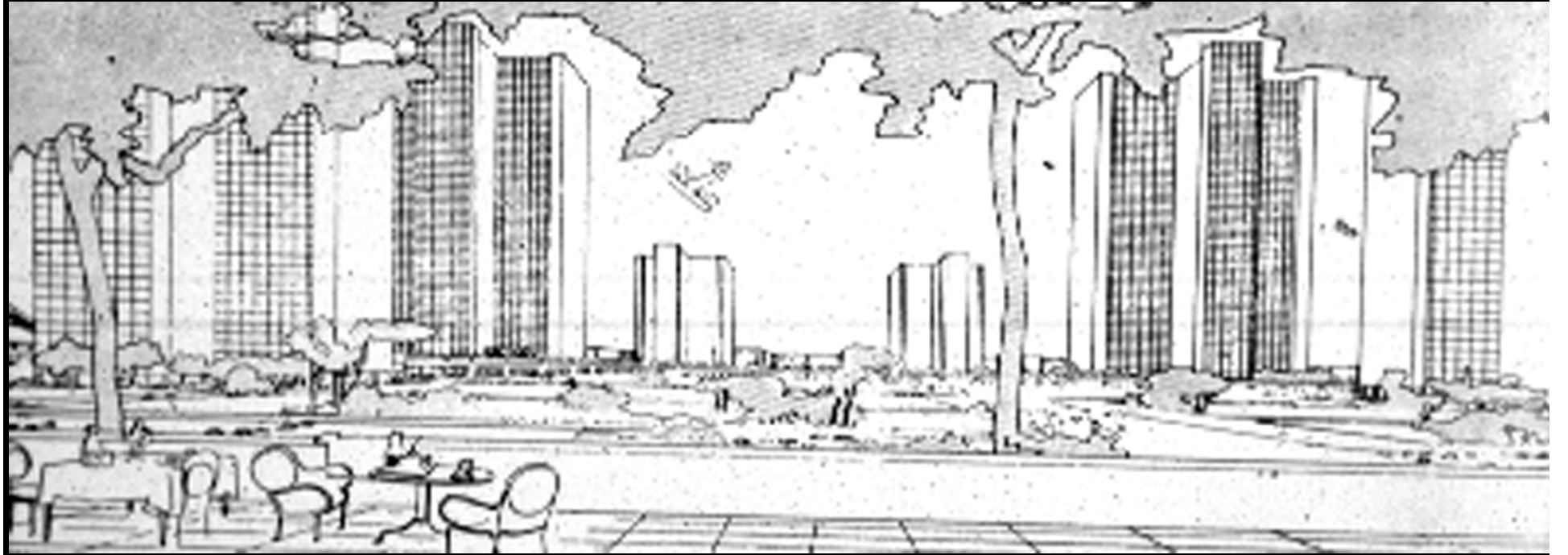


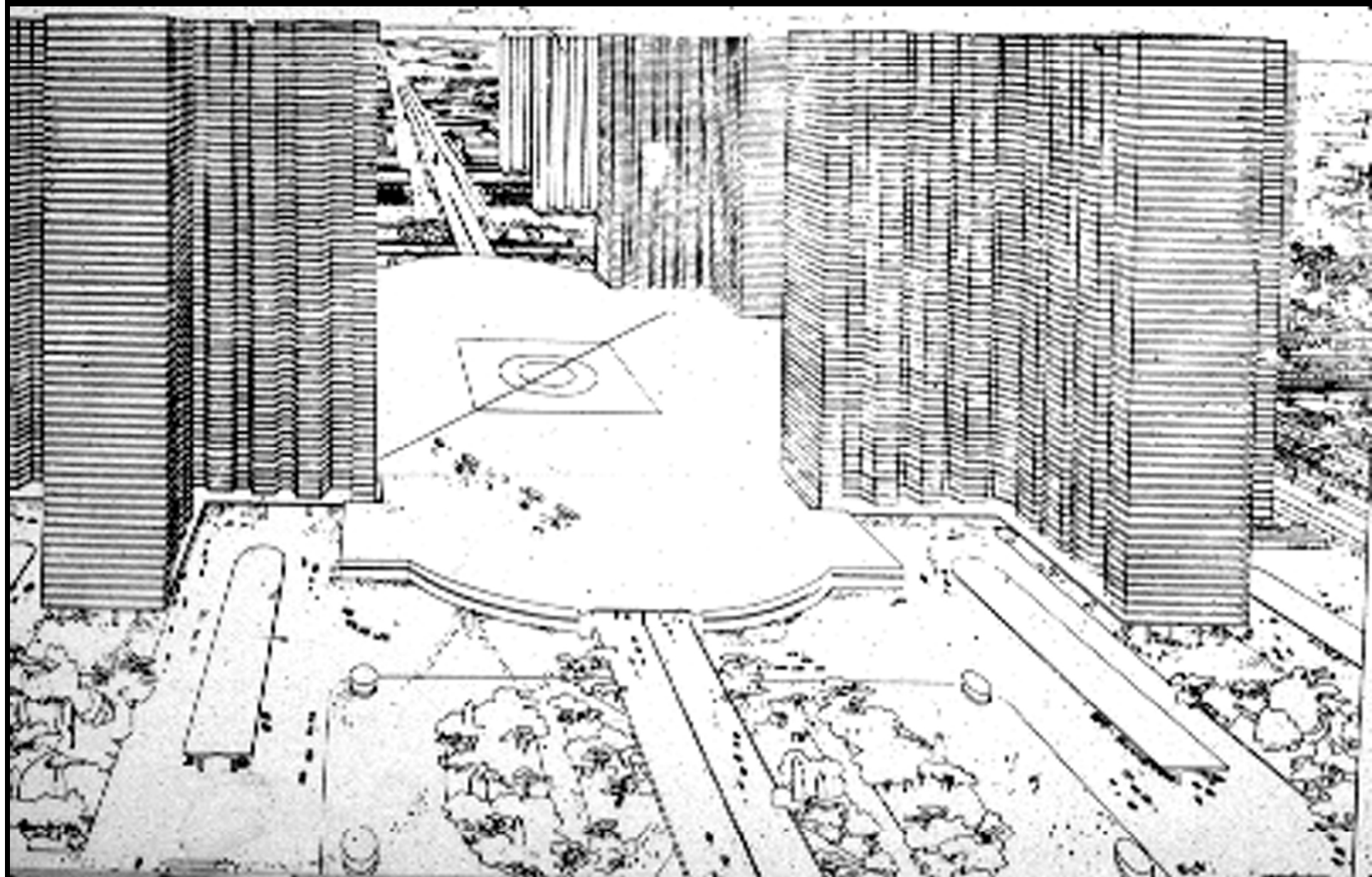


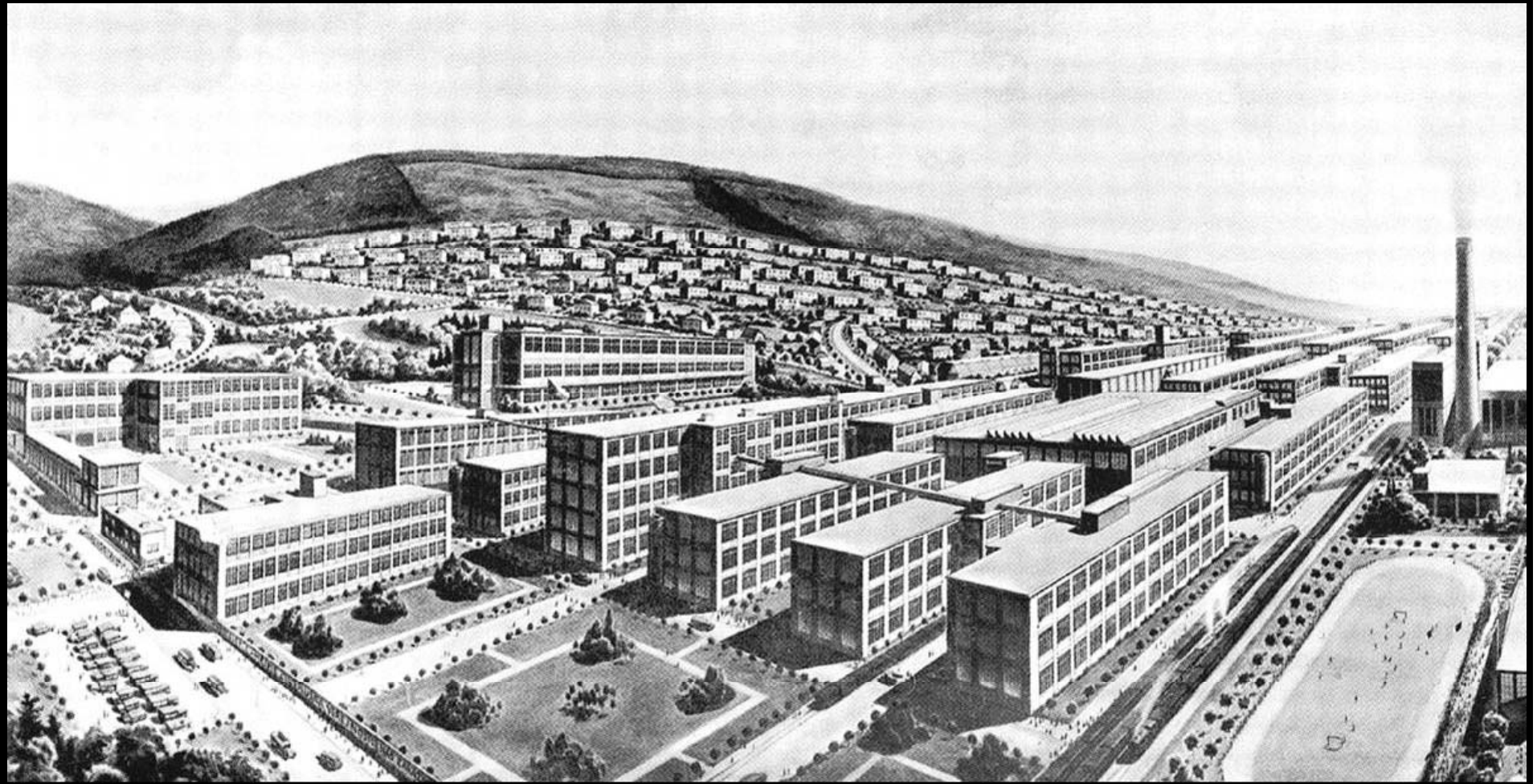


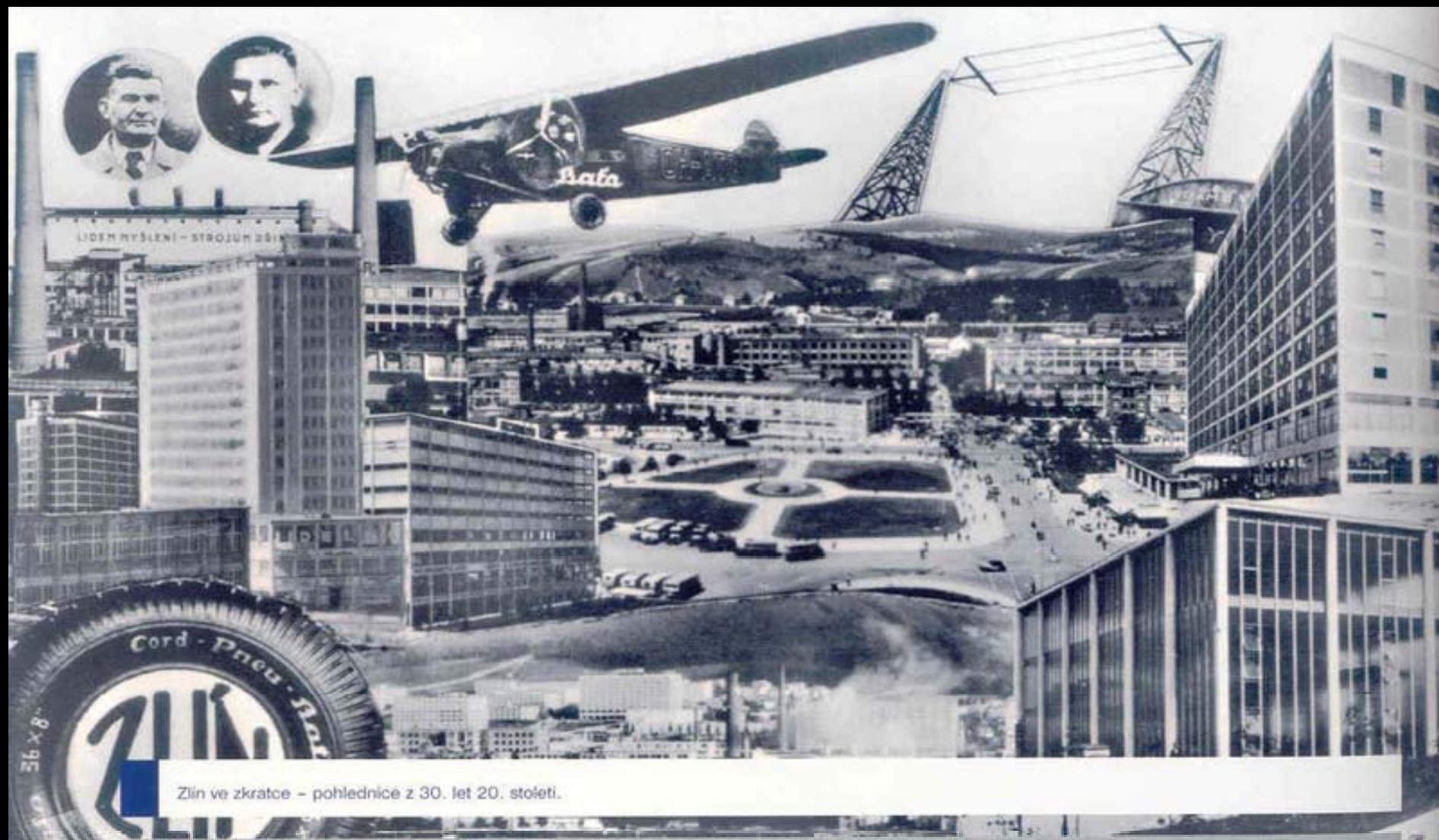












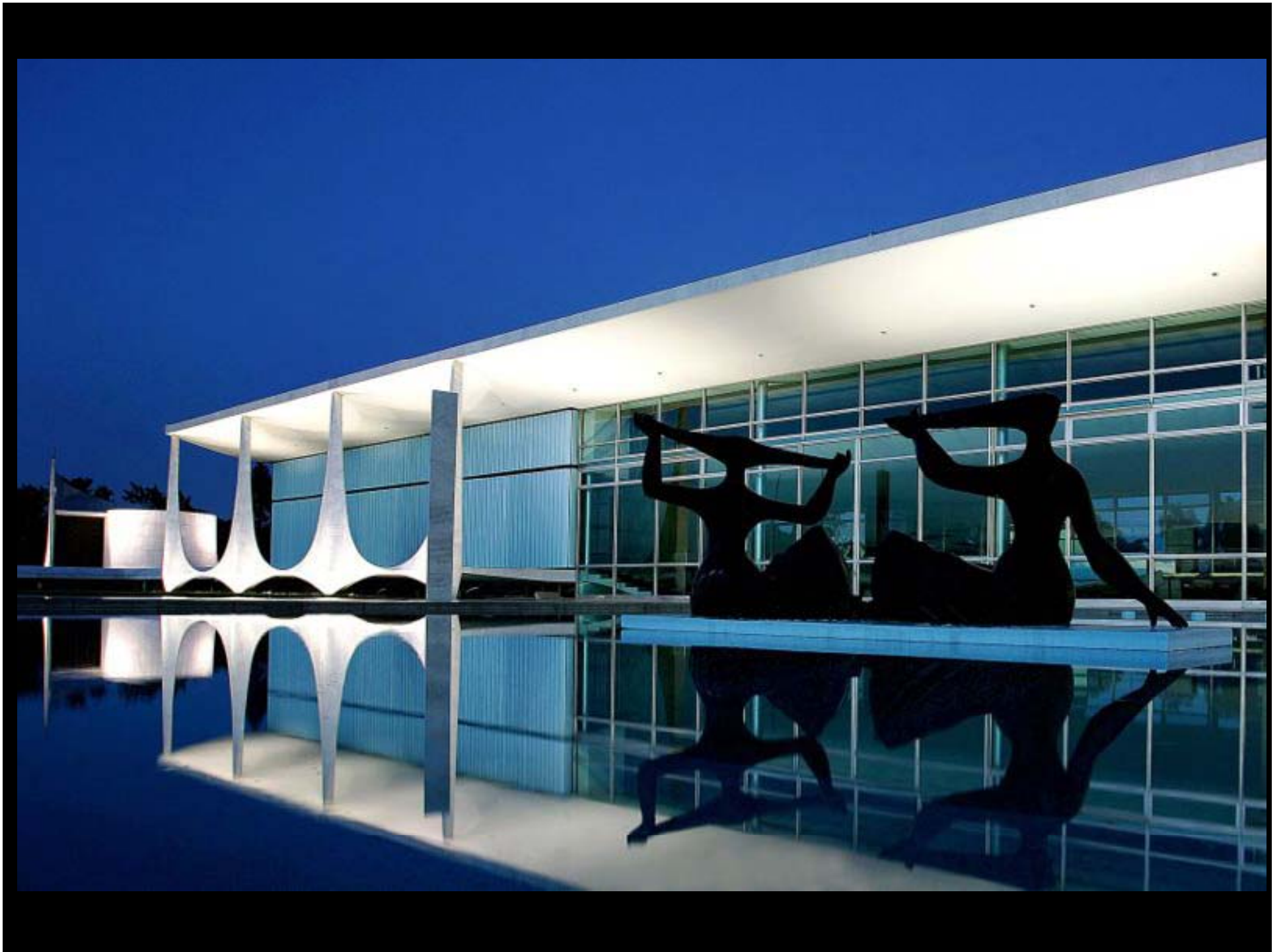
Zlín ve zkratce - pohlednice z 30. let 20. století.









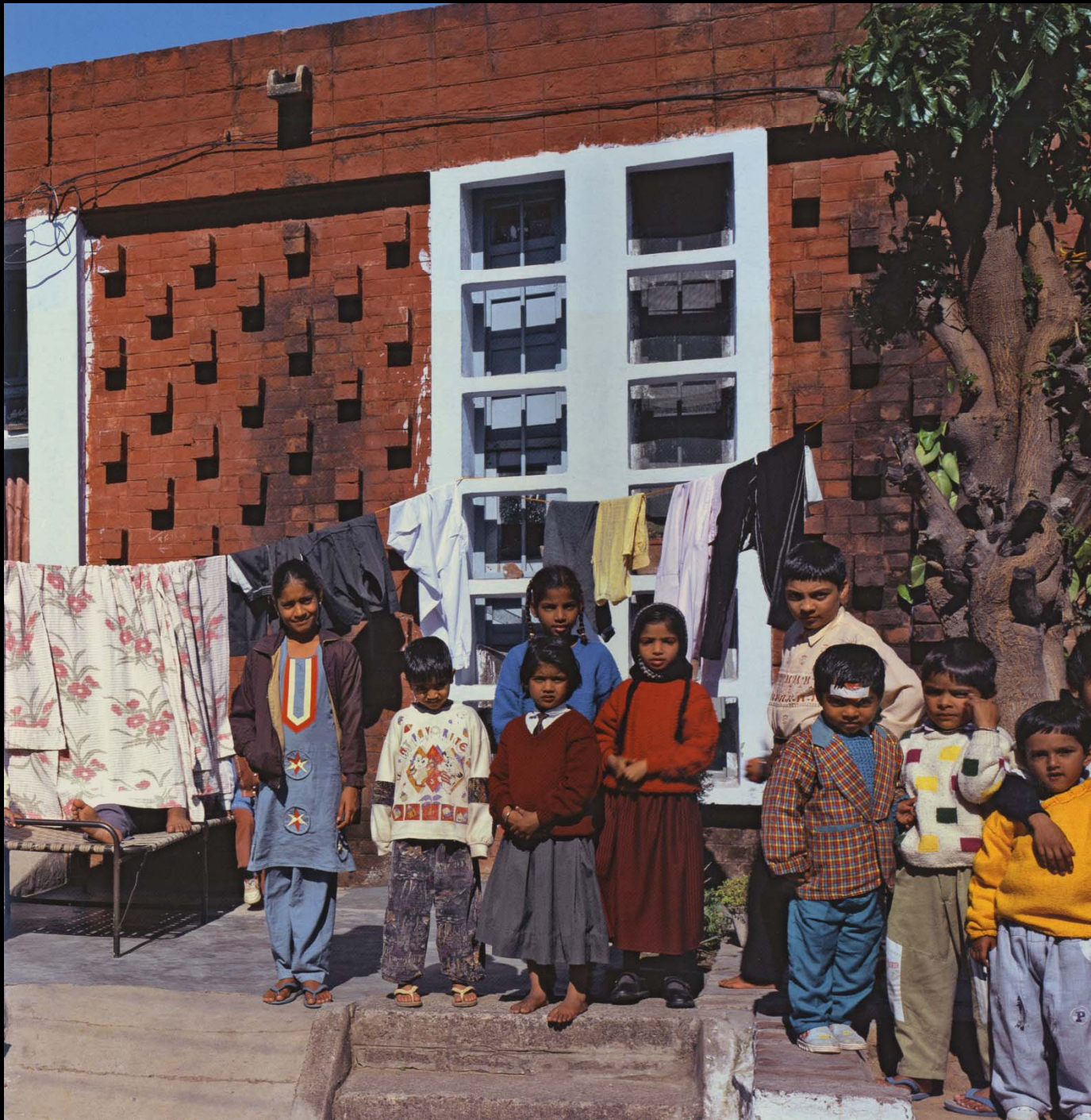




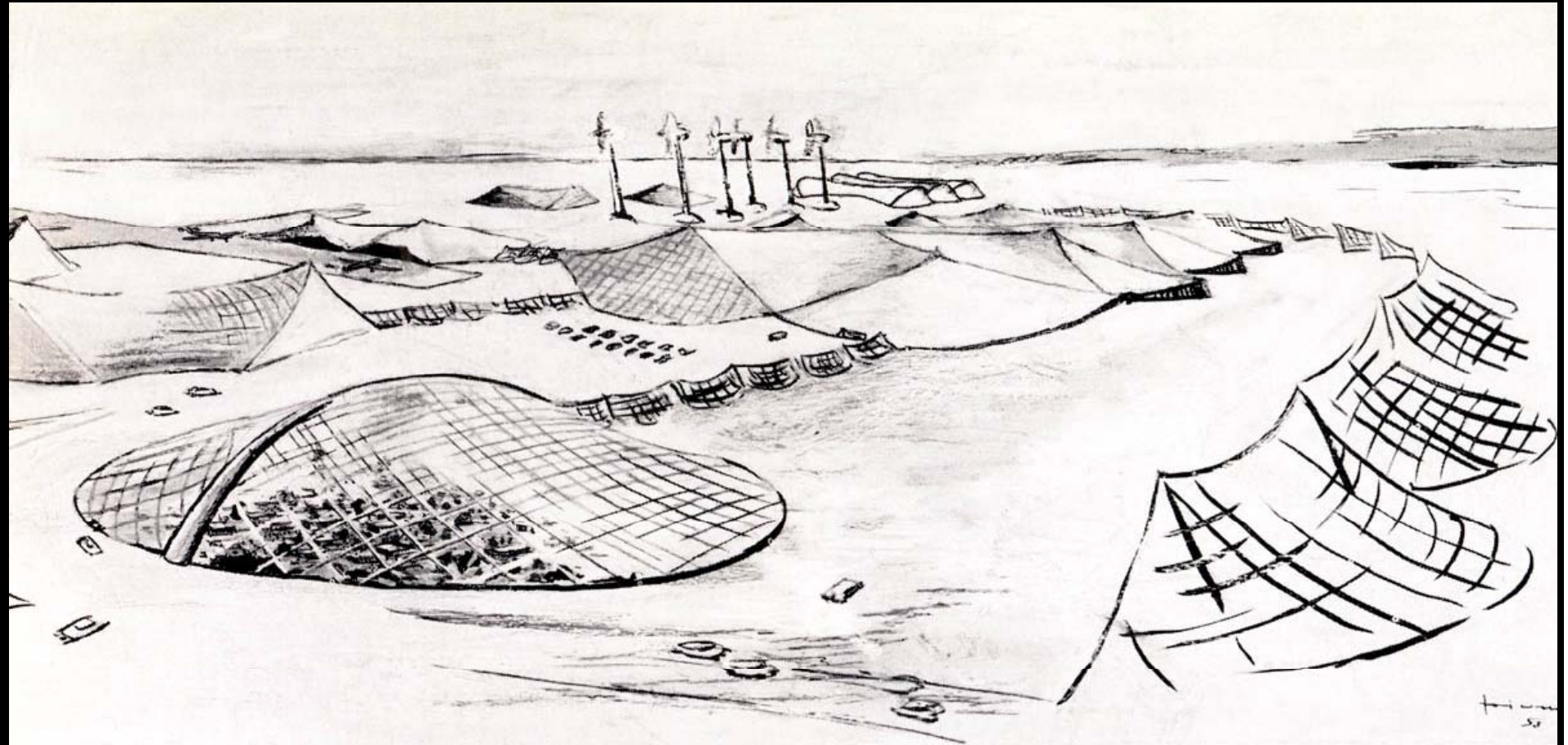


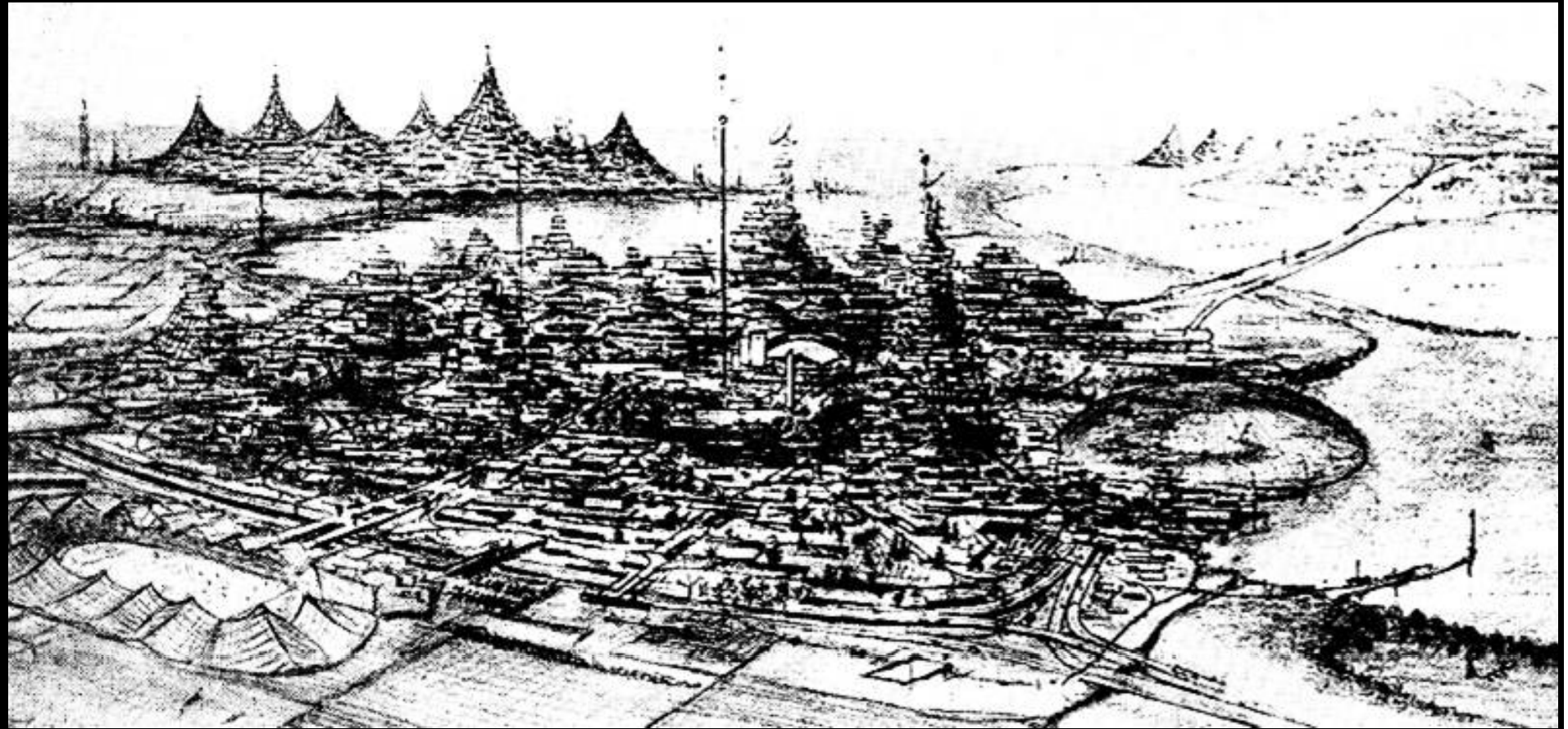


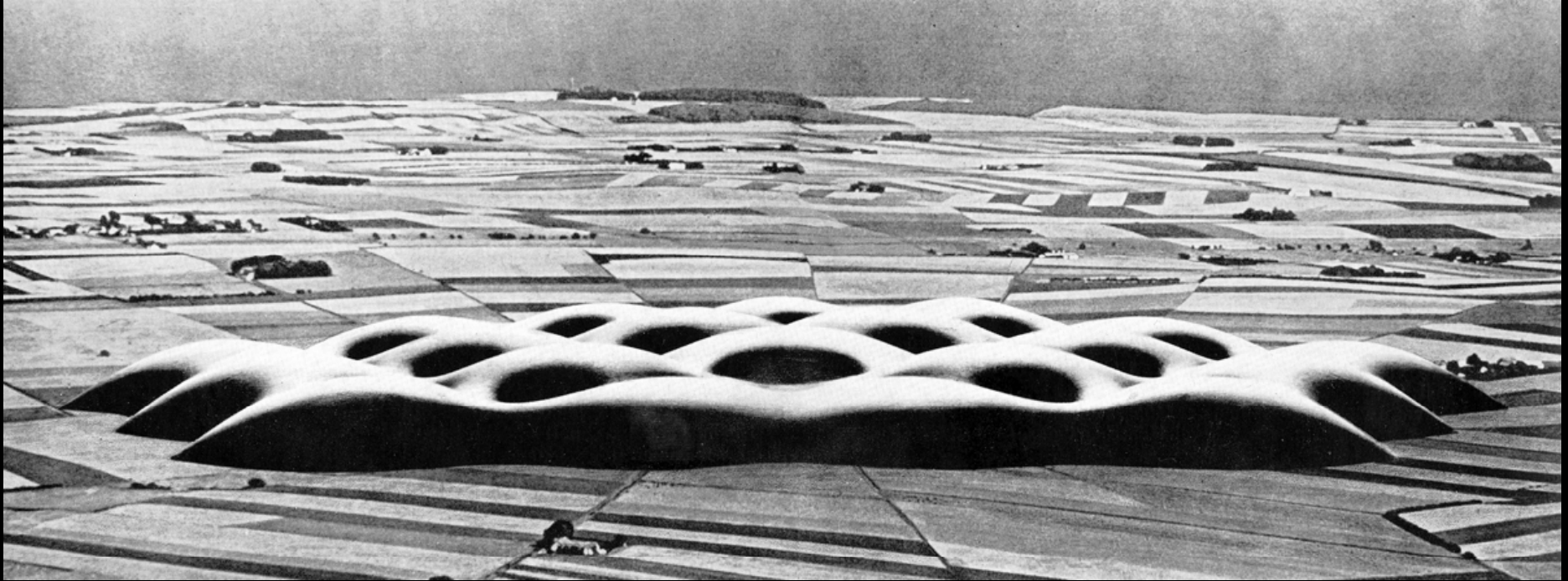




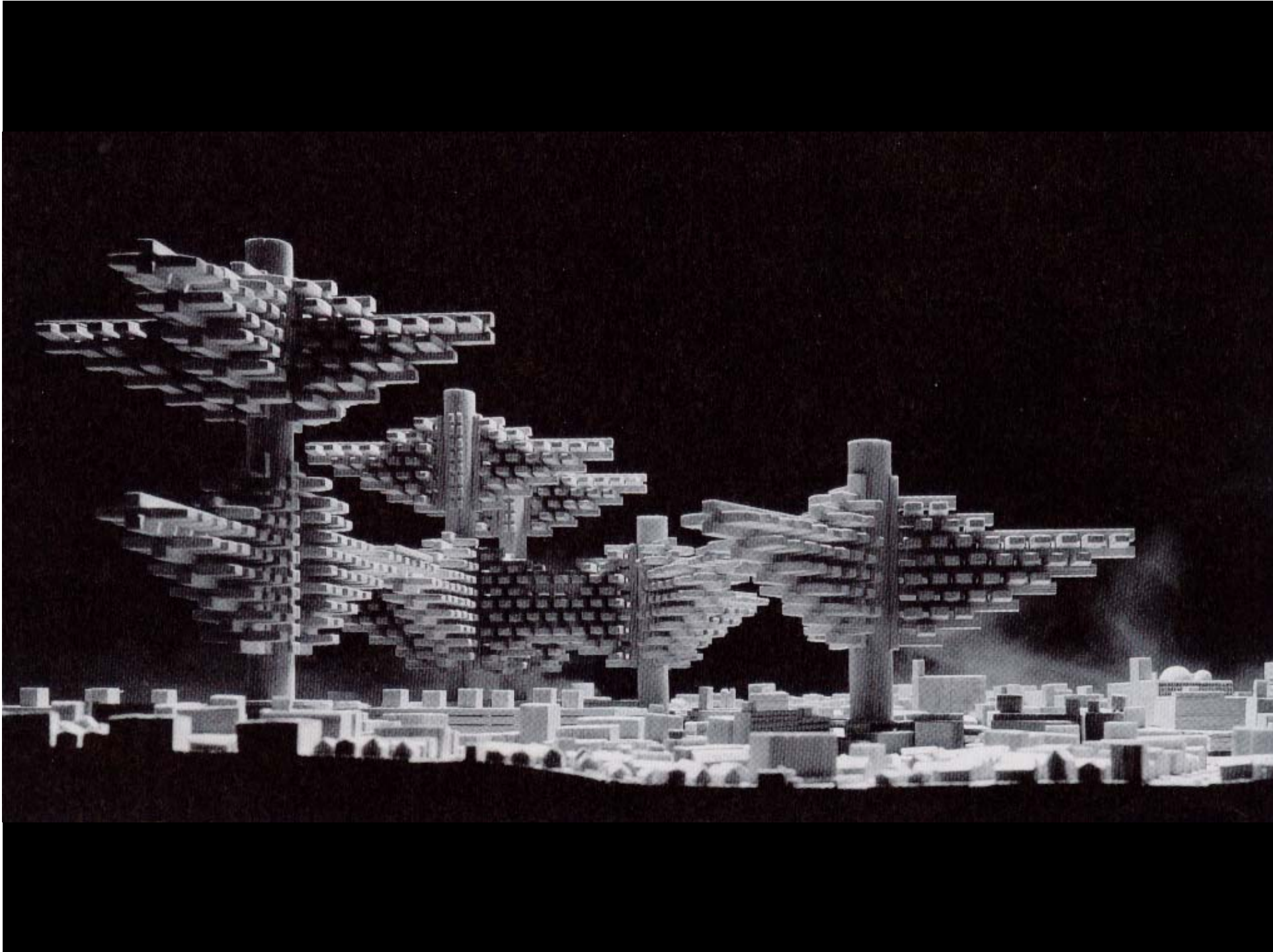


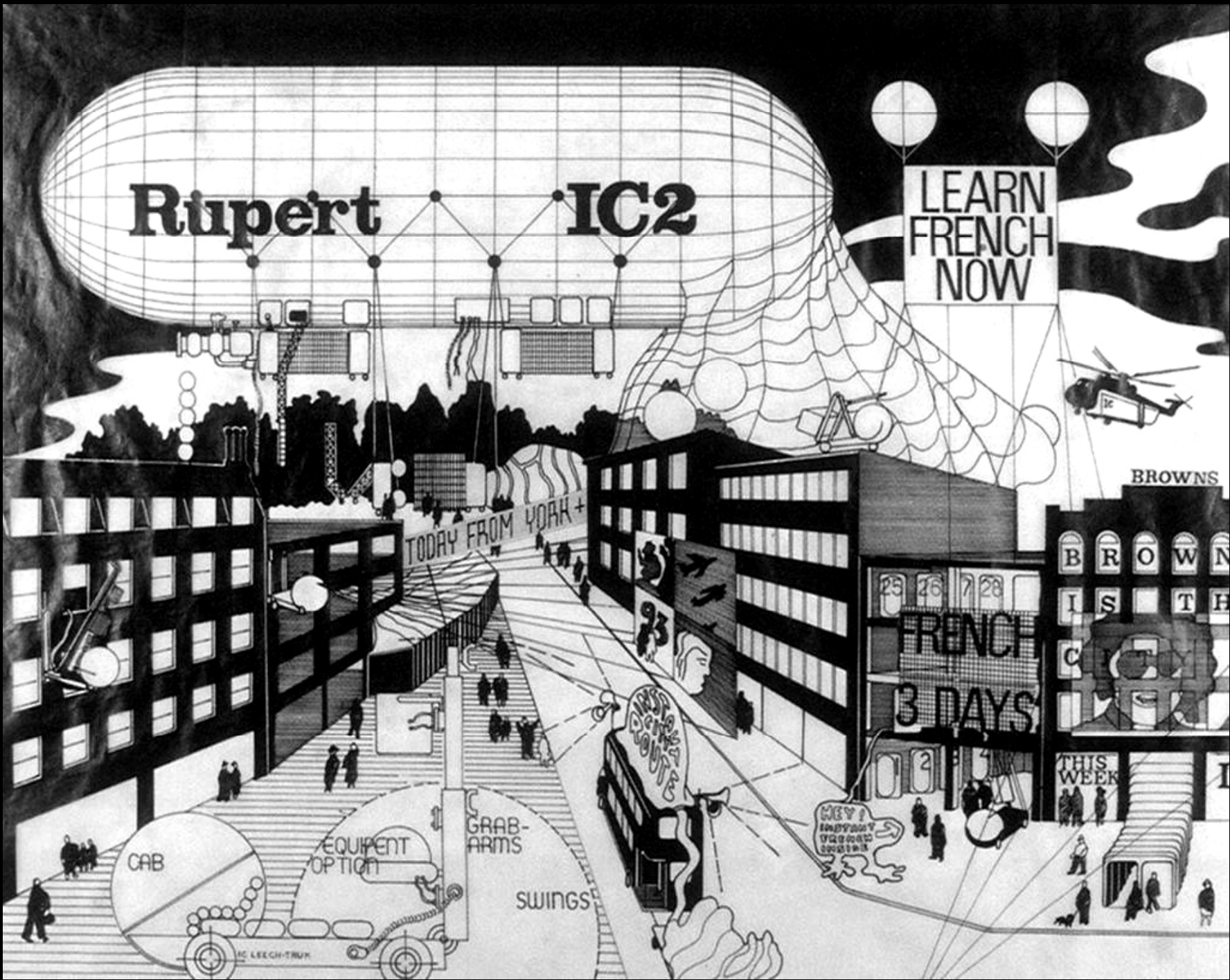


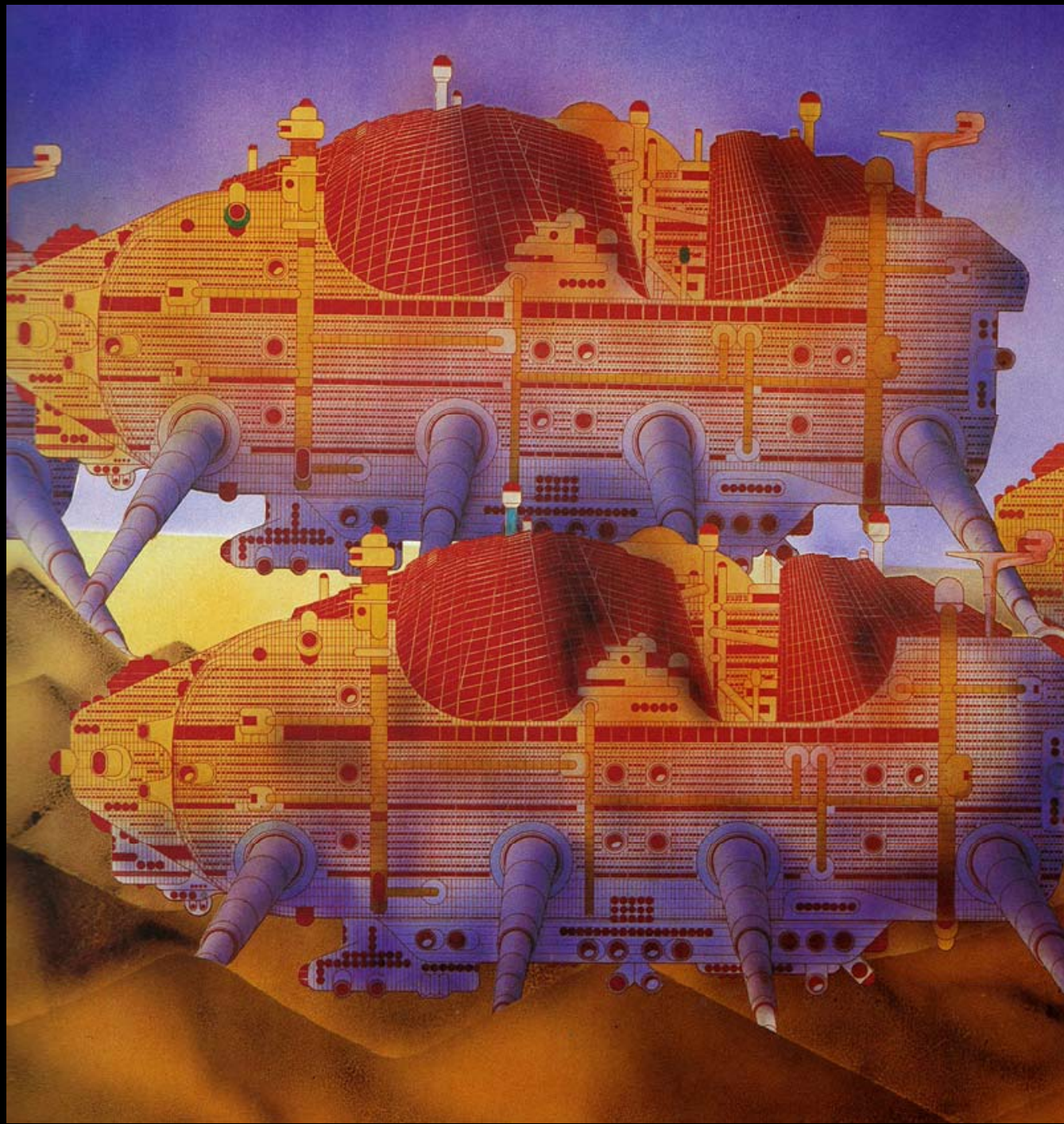


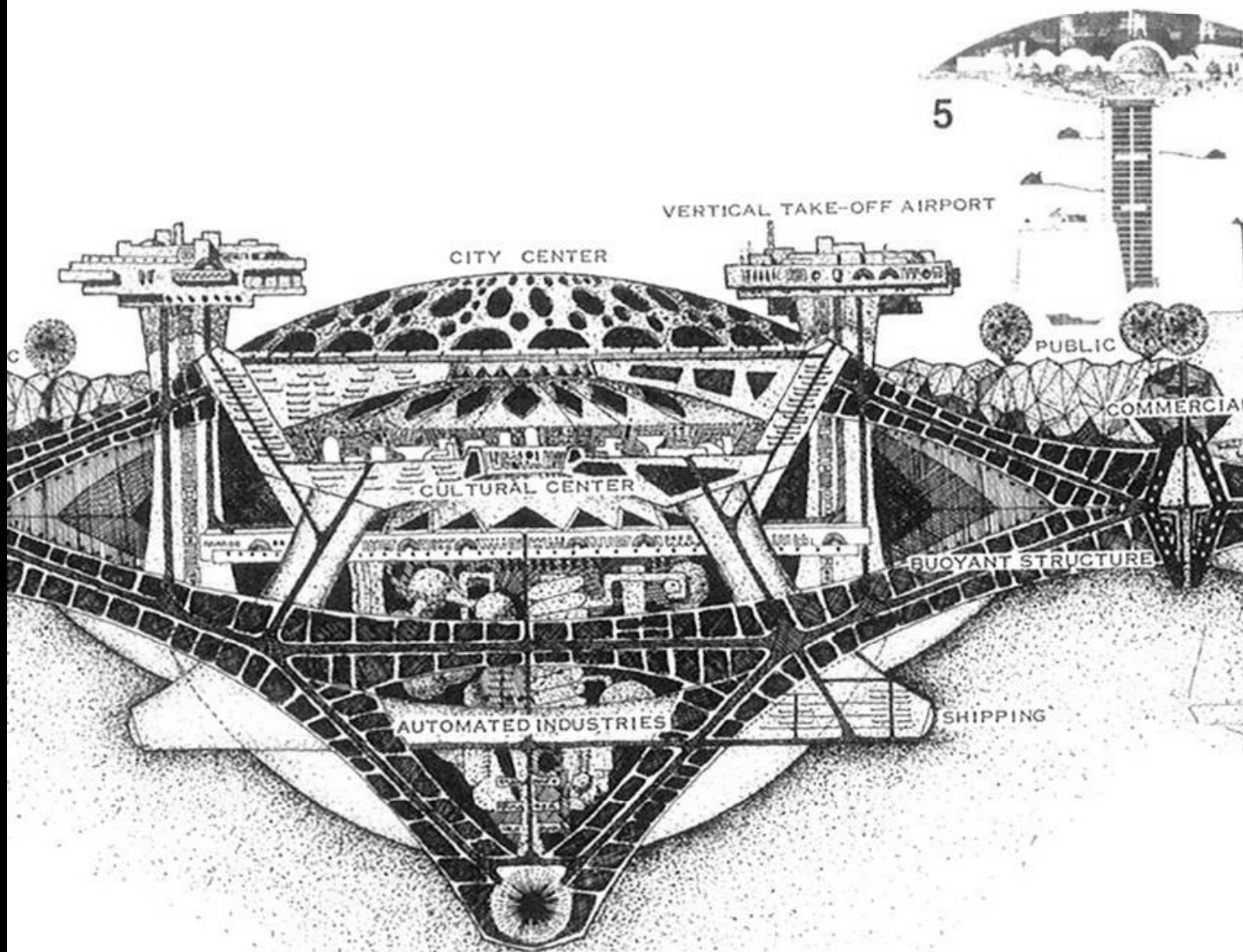






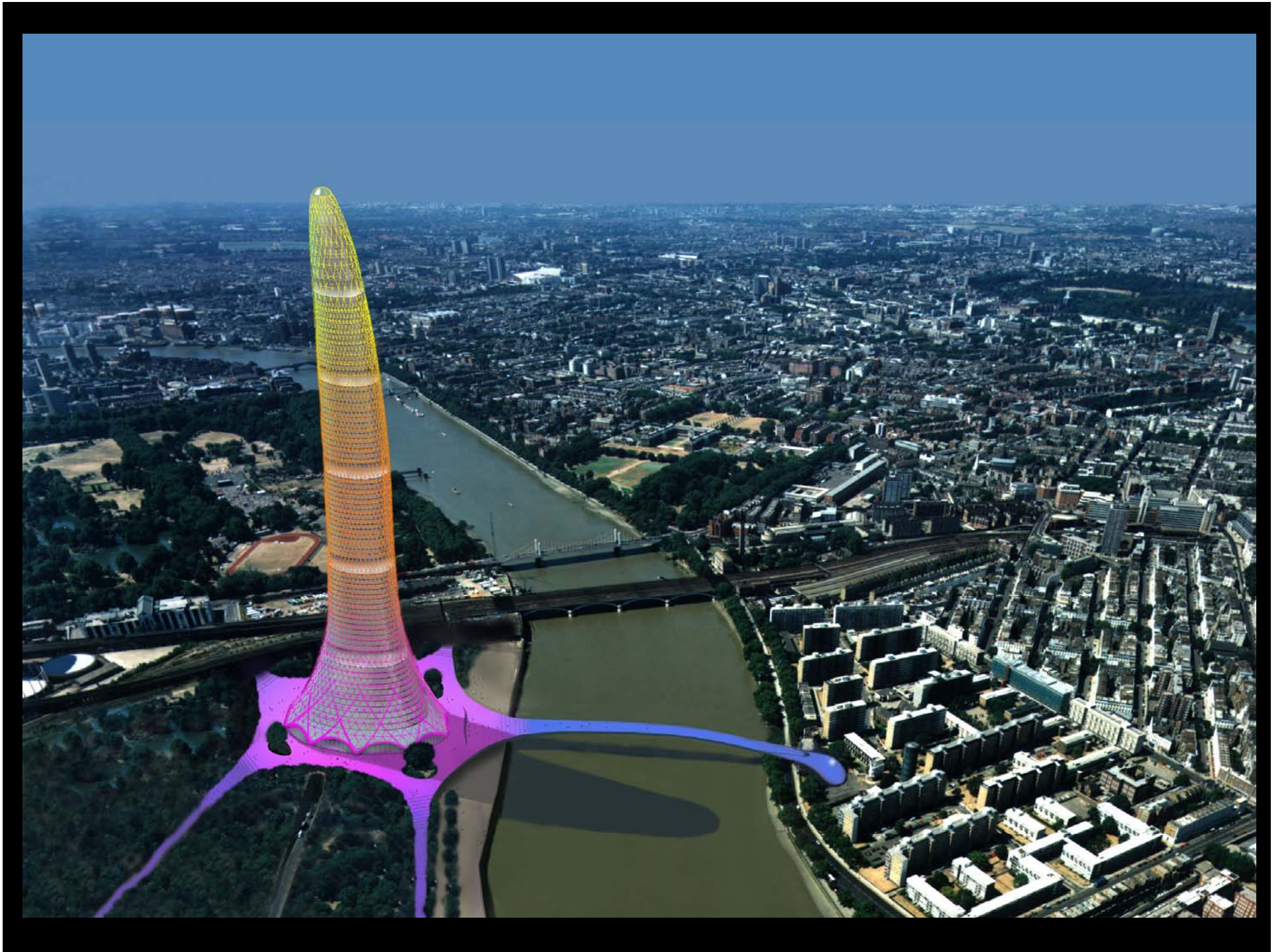


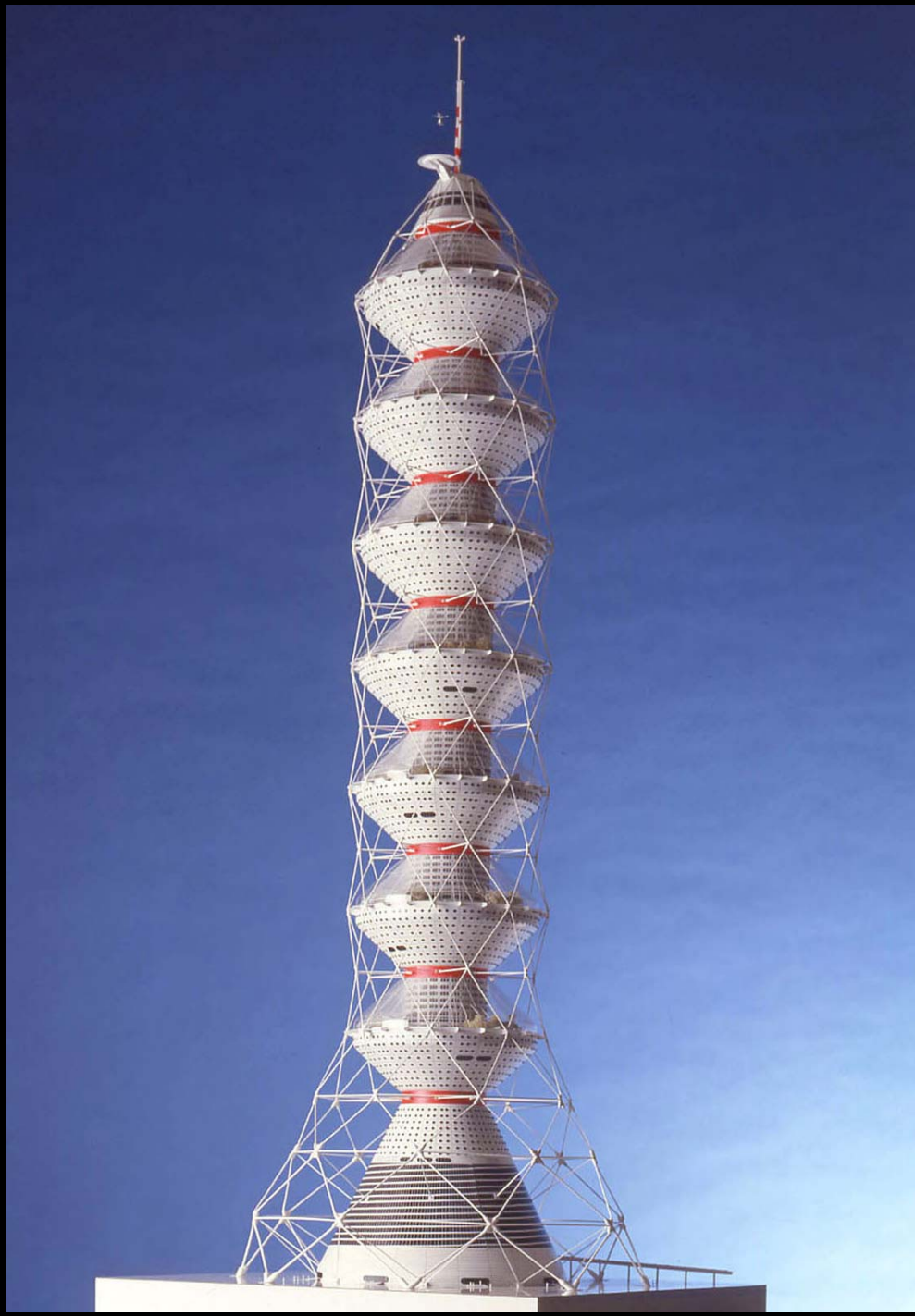
























NEW YORK



TOKYO



SHANGHAI



HONG KONG



NEW YORK





H&M LE PROJECT TRIANGLE PARIS





ASYMPTOTE WCB TOWER BUSAN



FOSTER + PARTNERS MASDAR CITY ABU DHABI



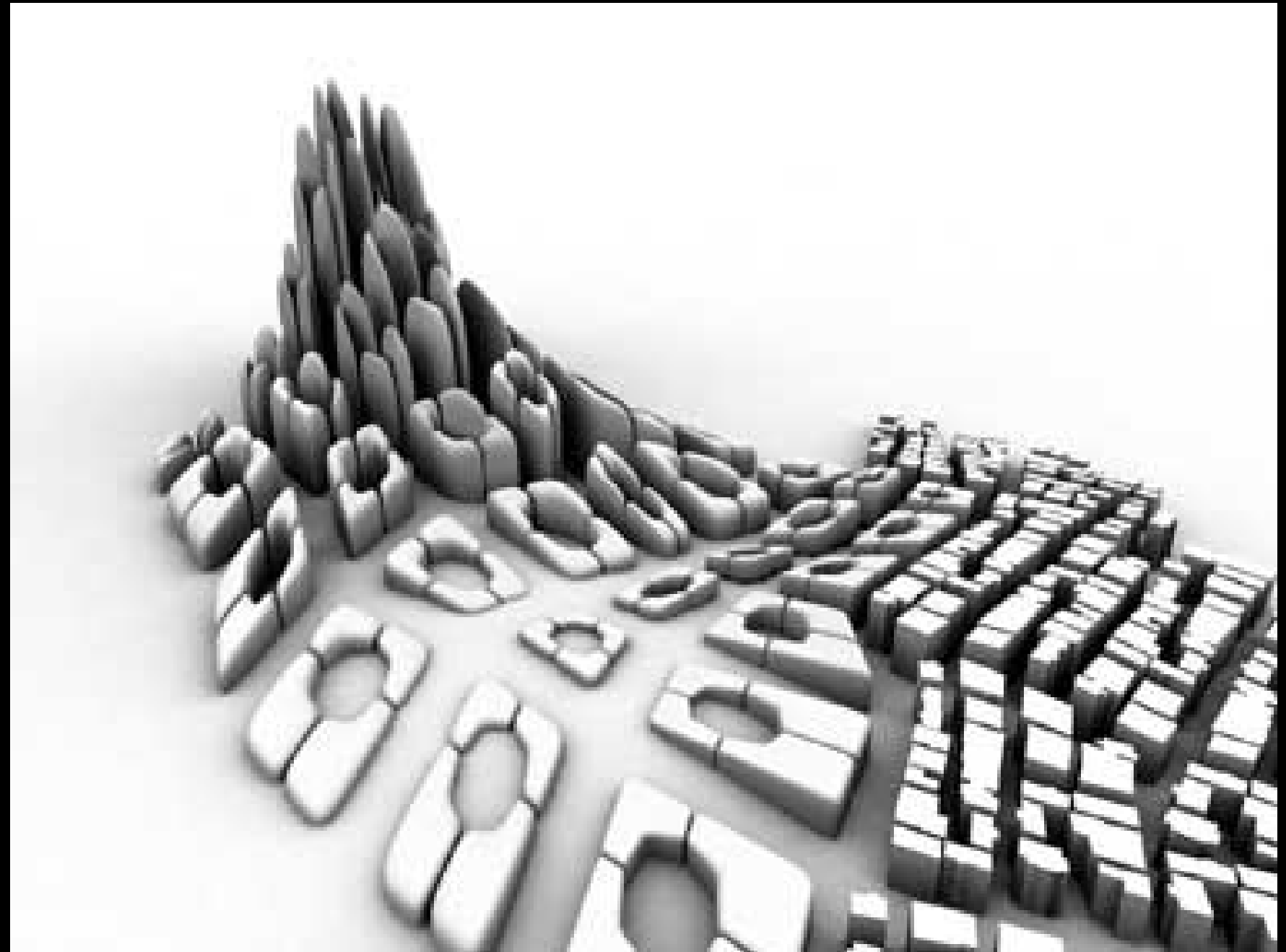
FOSTER + PARTNERS MASDAR CITY ABU DHABI



FOSTER + PARTNERS MASDAR CITY ABU DHABI



OMA RAS AL KHAIMAH CITY UAE



ZAHA HADID ARCHITECTS ISTANBUL



TVS ASSOCIATES DUBAI TOWERS



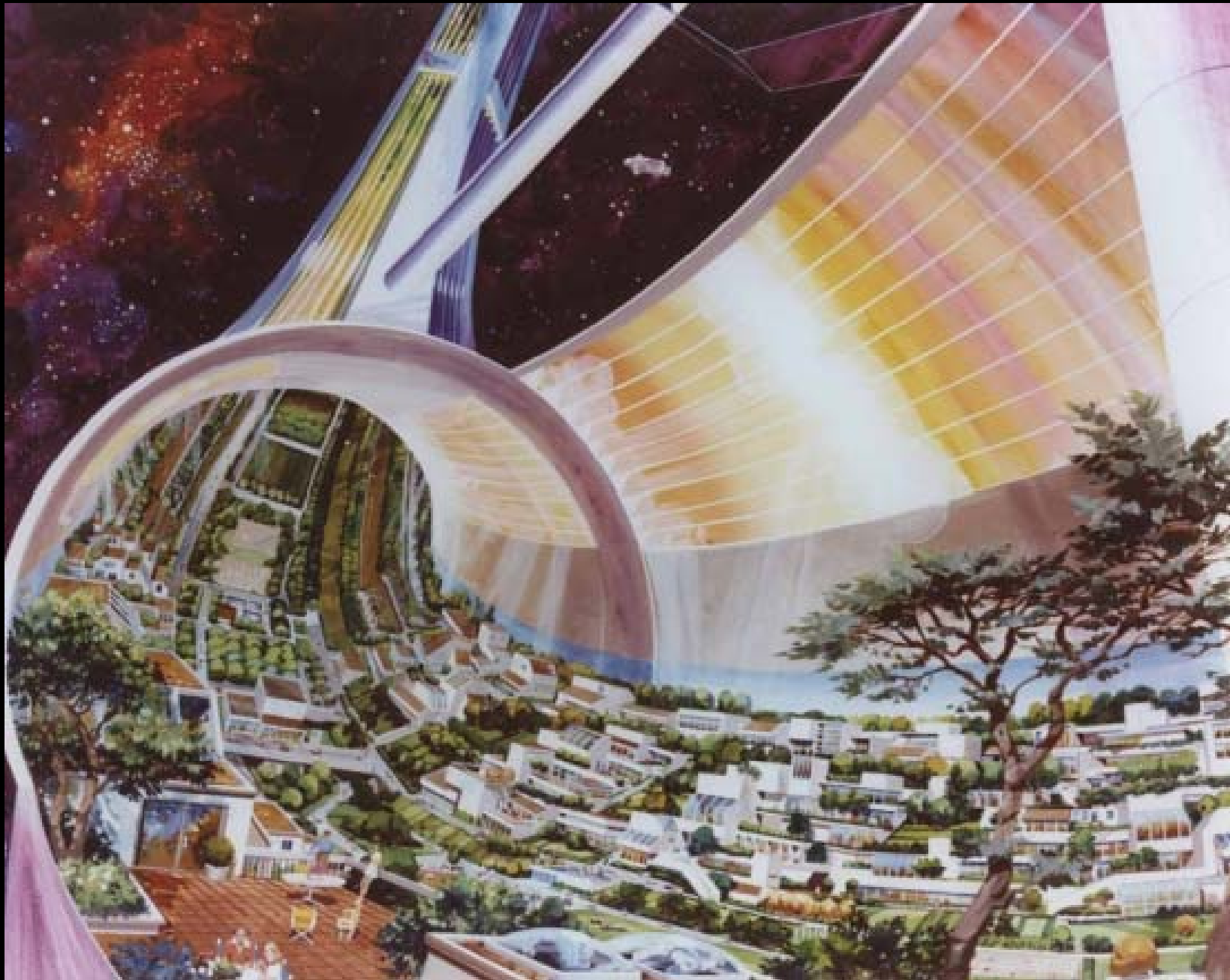
MVRDV GWANGGYO POWER CENTER SOUL



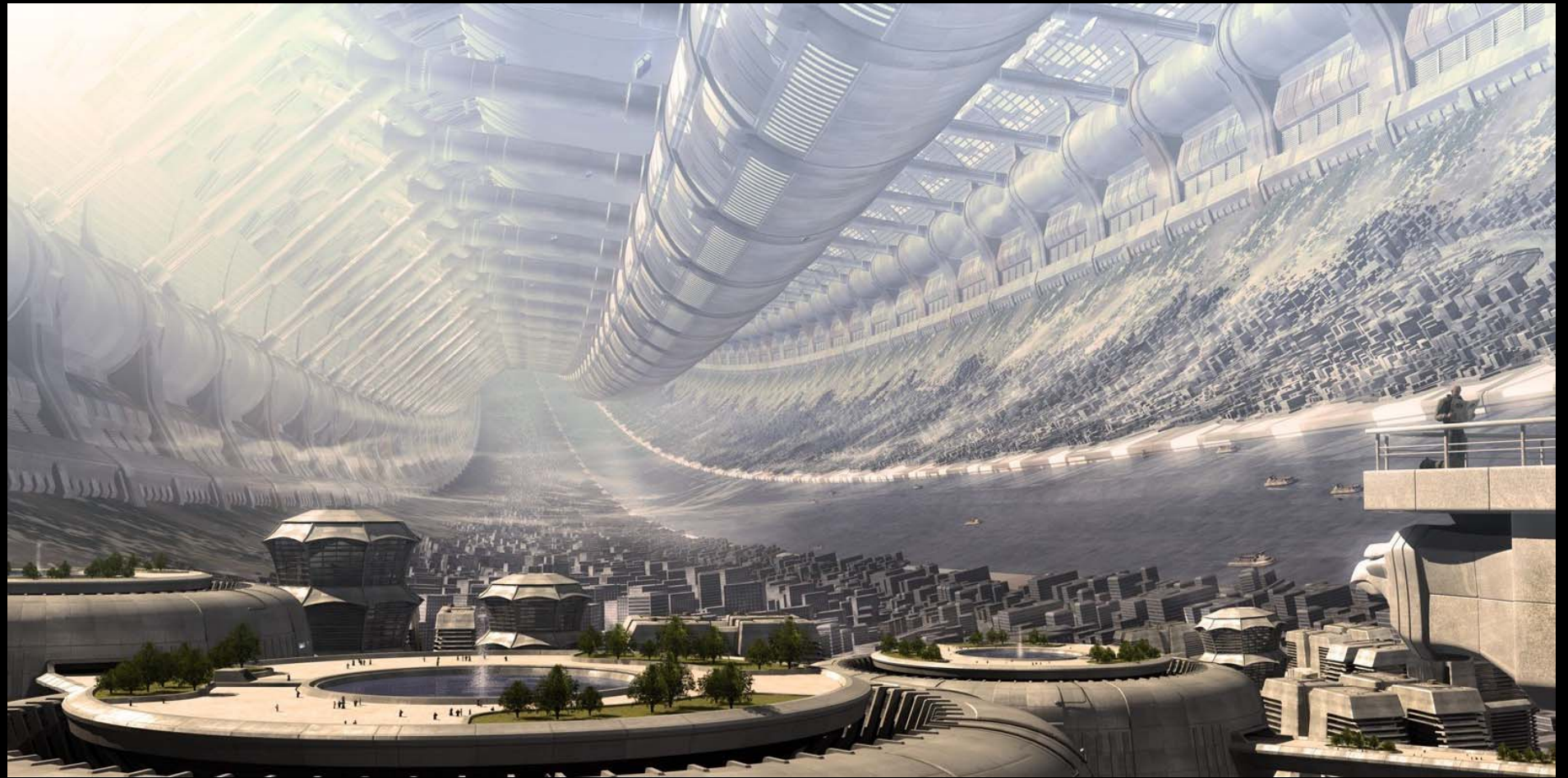
MAD CHINESE WALKING CITY



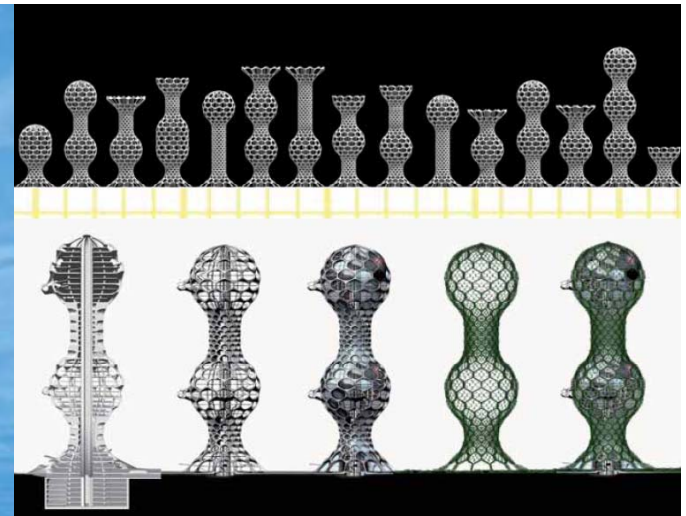
GEORGE LUCAS STAR WARS SKY CITY



CENTRIFUGAL SPACESHIP CITY



CENTRIFUGAL SPACESHIP CITY



Architect: minsuk cho
Office: mass studies

OVERALL VIEW OF SEOUL
COMMUNE 2026: RETHINKING
"TOWERS IN THE
PARK," CONCEIVED FOR A
SURFACE AREA OF 393, 400
SQUARE METERS IN
APGUJONGDONG, A CENTRAL
NEIGHBORHOOD
IN THE SOUTHERN PART OF
SEOUL



VERTICAL FARM

Architect: Eric Vergne

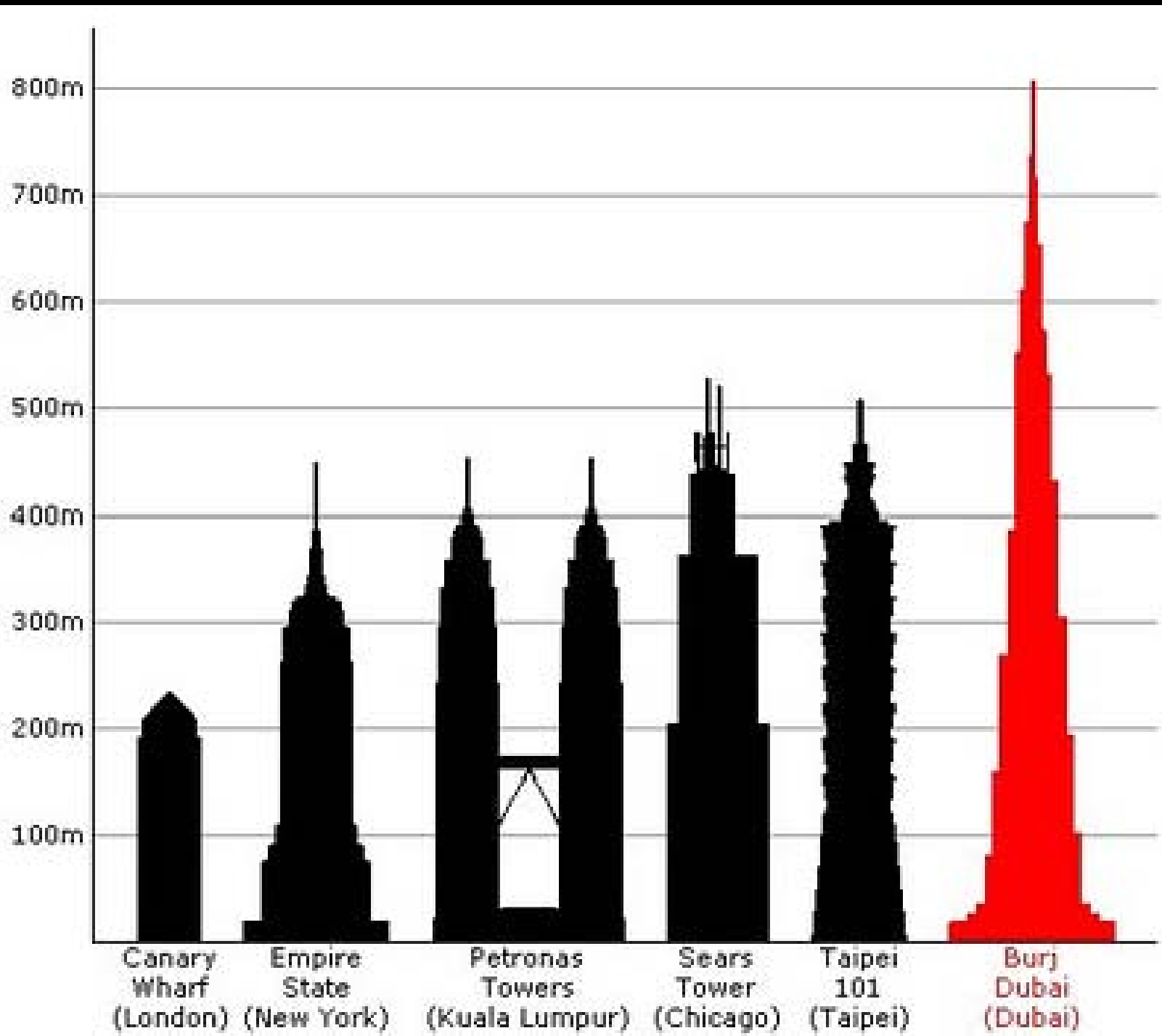
From the Evolo 2009
Skyscraper Competition,
3rd Place

As the world's population continues to skyrocket and cities strain under the increased demand for resources, **skyscraper farms** offer an inspired approach towards creating sustainable vertical density. One of three finalists in this year's **Evolo Skyscraper Competition** Eric Vergne's **Dystopian Farm** project envisions a future New York City interspersed with elegantly spiraling **biomorphic structures** that will harness cutting-edge technology to provide the city with its own self-sustaining food source.



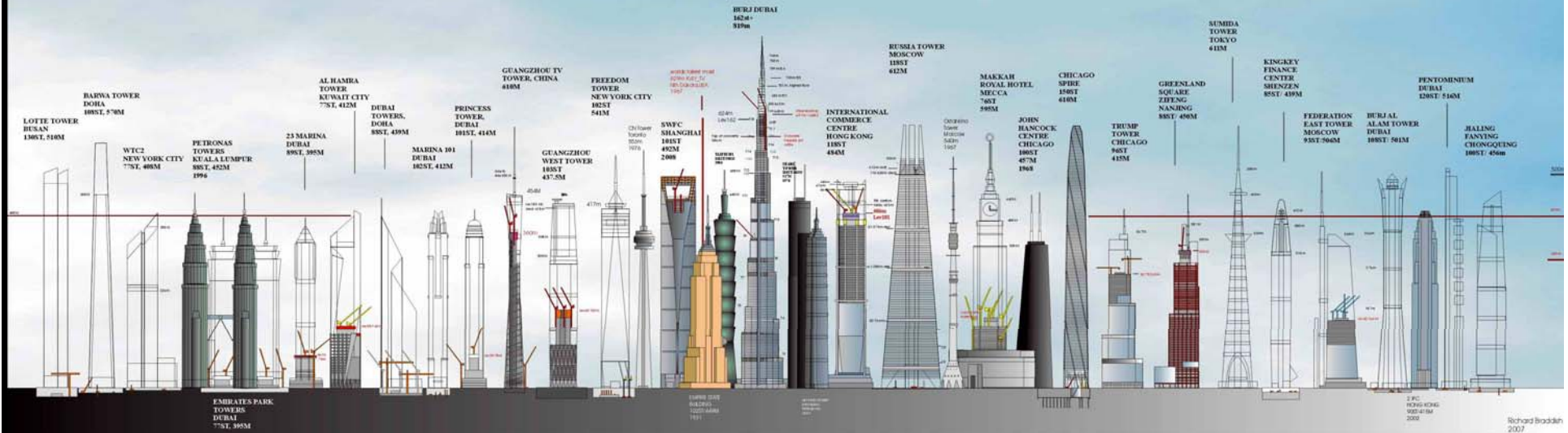
 DYNAMIC ARCHITECTURE™ - David Fisher Architect - ALL RIGHTS RESERVED 2008 © INTERNATIONAL PATENT PENDING





April, 2008
Construction update

**WORLDS TALLEST BUILDINGS/TOWERS.
OVER 400m in height.
Includes projects underconstruction.**



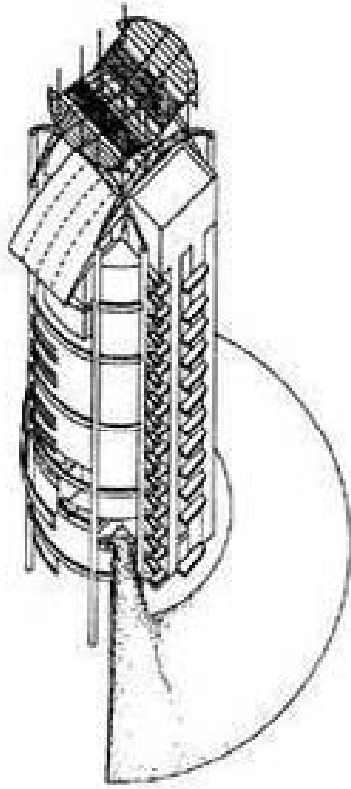
Richard Braddon
2007



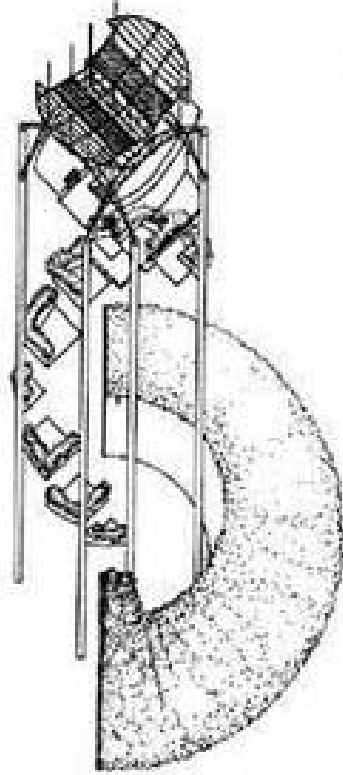




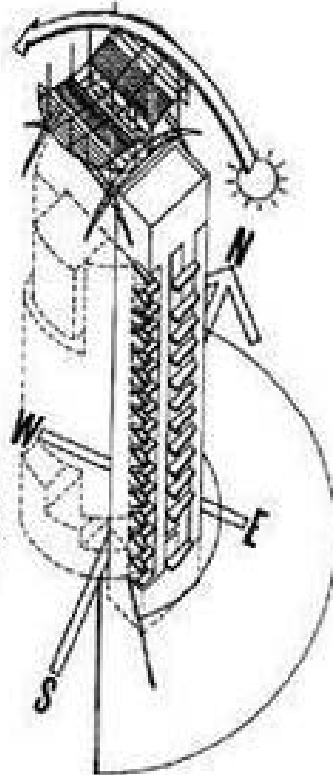




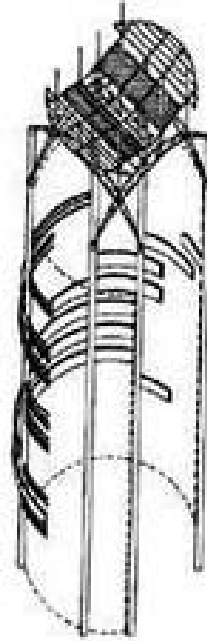
built form



planting



solar orientation



shading devices



